

## Sociální determinanty zdraví u sociálně a zdravotně znevýhodněných a jiných skupin populace

**CZ.1.07/2.3.00/20.0063**



evropský  
sociální  
fond v ČR



EVROPSKÁ UNIE



MINISTERSTVO ŠKOLSTVÍ,  
MLÁDEŽE A TĚLOVÝCHOVY



OP Inovace  
pro konkurenceschopnost

INVESTICE  
DO ROZVOJE  
VZDĚLÁVÁNÍ

Investice do rozvoje vzdělávání

*Tento projekt je spolufinancován Evropským sociálním fondem a státním rozpočtem České republiky.*



## Our scientific environment: competition & how to survive

**Assoc. Prof. Jitse P. van Dijk MD PhD**

Scientific Director

**Graduate School Kosice Institute for Society and Health**

Medical Faculty

P. J. Šafárik University,

Košice

&

**Department of Social Medicine**

University Medical Centre Groningen

University of Groningen

The Netherlands

[www.kish.upjs.sk](http://www.kish.upjs.sk)

- 1 Rankings
- 2 How to become competitive?
  - concentrate on certain research topics
  - publish internationally
  - reorganise the PhD structure
  - educate PhD students research skills systematically
  - selection promising students at an early stage of their studies
  - find international partners
- 3 The role of governmental financing
- 4 Summary

[www.kish.upjs.sk](http://www.kish.upjs.sk)

- increasingly important
- universities are compared
- SCI, SSCI and A&HCI output



## Criteria Academic Ranking World Universities (Shanghai)

* Alumni institutions winning a Nobel prize	10%
* Staff institutions winning a Nobel prize	20%
* Frequently cited researchers in 21 broad subject categories	20%
* Articles published in Nature and Science	20%
* Articles in the Science Citation Index-expanded and the Social Science Citation Index	20%
* Per capita academic performance per institution	10%

<http://www.arwu.org>



## Top ten European Universities on the basis of ARWU

2010

1	Univ Cambridge	UK
2	Univ Oxford	UK
3	Univ Coll London	UK
4	Swiss Fed Inst Tech Zurich	CH
5	Imperial Coll London	UK
6	Univ Paris 06	F
7	Univ Copenhagen	DK
8	Karolinska Institute	SE
9	Univ Manchester	UK
10	Univ Paris Sud (11)	F
--		
39	<u>Univ Groningen</u>	<u>NL</u>
--		
77	Charles Univ Prague	CZ

77 Charles University Prague	CZ	(Eur 75-123)
128 Eotvas Lorand University	HU	(Eur 124-168)
130 Jagiellonian University	PL	(Eur 124-168)
162 University of Szeged	HU	(Eur 124-168)
167 University of Warsaw	PL	(Eur 124-168)

No more CE universities are mentioned in ARWU's World top 500

- very different universities are compared
- always: absolute scores of SCI, SSCI and A&HCI
- local discipline vs. world average in a particular discipline

ARWU has recently tried to address these:

by using 5 fields

Scopus: SCImago

[http://www.scimagoir.com/pdf/sir\\_2010\\_world\\_report.pdf](http://www.scimagoir.com/pdf/sir_2010_world_report.pdf)



## CZ and SK Universities – Normalized Impact (SCImago 2011)

	NI	%Q1
NL - Univ Groningen	1.7	70.8
CZ - University of South Bohemia	1.0	46.7
CZ - Palacky University Olomouc	0.9	38.6
CZ - Charles University Prague	0.9	35.4
CZ - University of Pardubice	0.8	43.1
CZ - Masaryk University Brno	0.8	35.9
SK - Safarik University Kosice	0.8	32.4
SK - Comenius University Bratislava	0.7	31.3



## Effect of comparison

- increasingly important
- possibilities for successful applications for grants
- money from the government

## University: Quo Vadis?

- just local significance
- or
- fight for a high ranking

## University of Groningen

**'Working at the frontiers of science'**

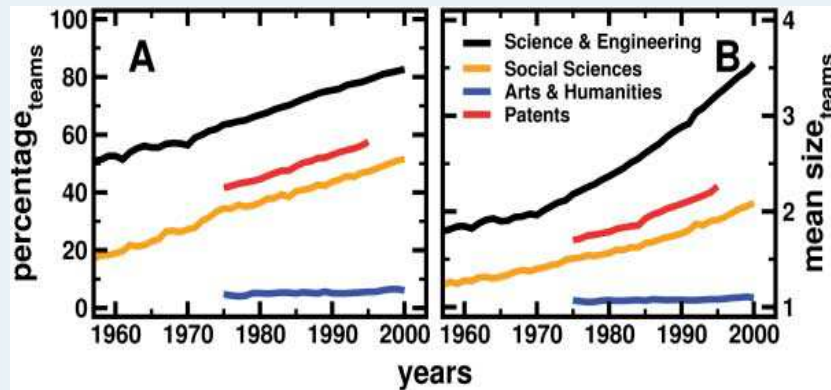
## How to reach such a position?

- concentrate on certain research topics
- publish internationally
- reorganise the PhD structure
- educate PhD students research skills systematically
- select promising students early during their studies
- find international partners

## How to reach such a position?

- **concentrate on certain research topics**
- publish internationally
- reorganise the PhD structure
- educate PhD students research skills systematically
- select promising students early during their studies
- find international partners

## How to reach such a position?



S Wuchty, BF Jones, B Uzzi. The Increasing Dominance of Teams in Production of Knowledge. *Science* 2007 (316): 1036-1039

## How to reach such a position?

- concentrate on certain research topics
- **publish internationally**
- reorganise the PhD structure
- educate PhD students research skills systematically
- select promising students early during their studies
- find international partners



## How to reach such a position?

- concentrate on certain research topics
- publish internationally
- **reorganise the PhD structure: replace monographs with articles**
- educate PhD students research skills systematically
- select promising students early during their studies
- find international partners

## How to reach such a position?

- concentrate on certain research topics
- publish internationally
- reorganise the PhD structure
- **educate PhD students research skills systematically:**
  - **Graduate School**
- select promising students early during their studies
- find international partners

## How to reach such a position?

- concentrate on certain research topics
- publish internationally
- reorganise the PhD structure
- educate PhD students research skills systematically
- **select promising students early during their studies:**
  - **junior scientific master class (extra program)**
- find international partners

## How to reach such a position?

- concentrate on certain research topics
- publish internationally
- reorganise the PhD structure
- educate PhD students research skills systematically
- select promising students early during their studies
- **find international partners**

Introductory chapter

+

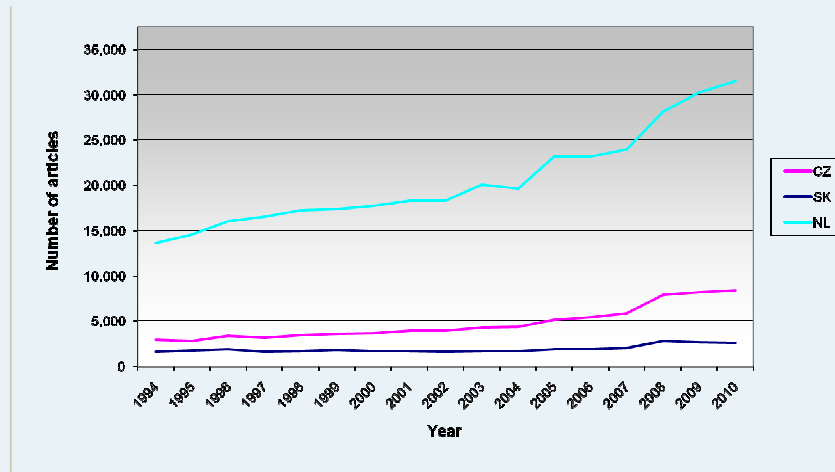
5 articles (SCI or SSCI)

+

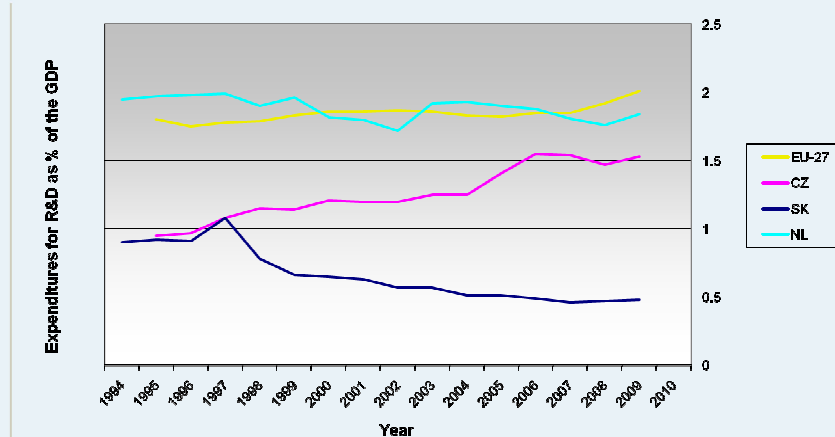
General Discussion

Zuzana Veselska		
Interpersonal factors, social context and health-related behavior in adolescence		
1	Introduction	
2	Data Sources	
3	Socioeconomic differences in self-esteem of adolescents influenced by personality, mental health and social support Veselska Z et al. <b>European Journal of Public Health (SSCI)</b> , 2010, 20: 647-652	Cit: 0
4	Self-esteem and resilience: the connection with risky behavior among adolescents Veselska Z et al. <b>Addictive Behaviors (SSCI)</b> , 2009, 34, 287-291	Cit: 5
5	Self-efficacy, affectivity and smoking behavior in adolescence Veselska Z et al. <b>European Addiction Research (SSCI)</b> , 2011, 17: 172-177	Cit: 0
6	Aspects of self differ among physically active and passive youths Veselska Z et al. <b>International Journal of Public Health (SSCI)</b> , 2011, 56: 311-318	Cit: 0
7	Socioeconomic status and physical activity among adolescents: the mediation role of self-esteem Veselska Z et al. <b>Public Health (accepted)</b>	Cit: -
8	General Discussion, implications for future research and practice and conclusions	

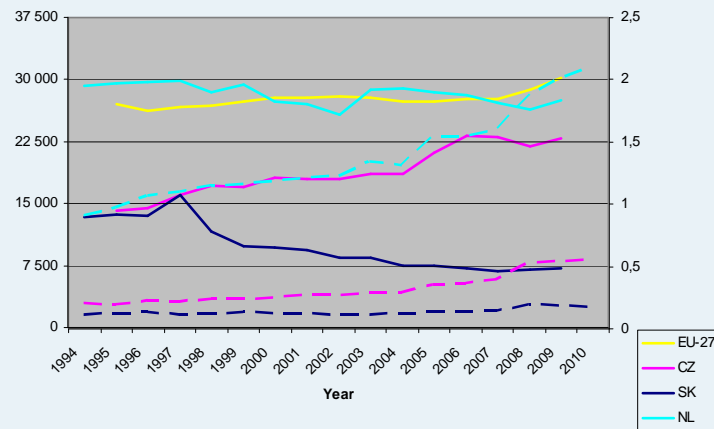
## Scientific output (IF) in CZ, SK and NL from 1994-2010



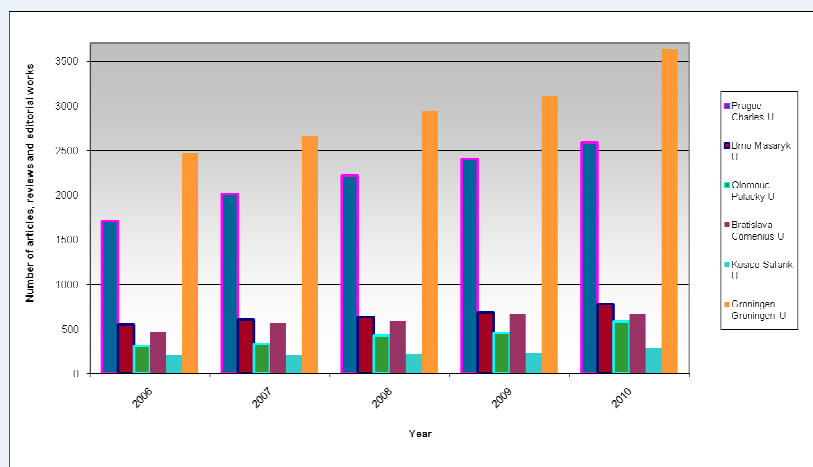
## R&D expenditures (% GDP) in CZ, SK, NL and EU-27 over 1994-2010



## Scientific output & R&D expenditures 1994-2010



## Scientific output (IF): 3 CZ, 2 SK, 1 NL from 2006-2010



## Suggestions for U Olomouc

- 1) a PhD thesis should consist of articles (SCI, SSCI or A&HCI)
- 2) systematic education for PhD students / researchers

## University: Quo Vadis?

- just local significance
- or
- fight for a high ranking

- data collection
- how to write an article?
- basic descriptive statistics
- how to cope with reviewer's comments?

Means :  
a structural education for researchers

Aim :  
the University's output increases – quantitatively and qualitatively



“Your University needs  
**YOU**“

**Thank you for your attention!**





## Questions

Questions???

**Sociální determinanty zdraví u sociálně  
a zdravotně znevýhodněných a jiných  
skupin populace**

**CZ.1.07/2.3.00/20.0063**



evropský  
sociální  
fond v ČR



EVROPSKÁ UNIE



MINISTERSTVO ŠKOLSTVÍ,  
MLÁDEŽE A TĚLOVÝCHOVY



OP Vzdělávání  
pro konkurenceschopnost

INVESTICE  
DO ROZVOJE  
VZDĚLÁVÁNÍ

Investice do rozvoje vzdělávání

Tento projekt je spolufinancován Evropským sociálním fondem a státním rozpočtem České republiky.



## Next presentation